



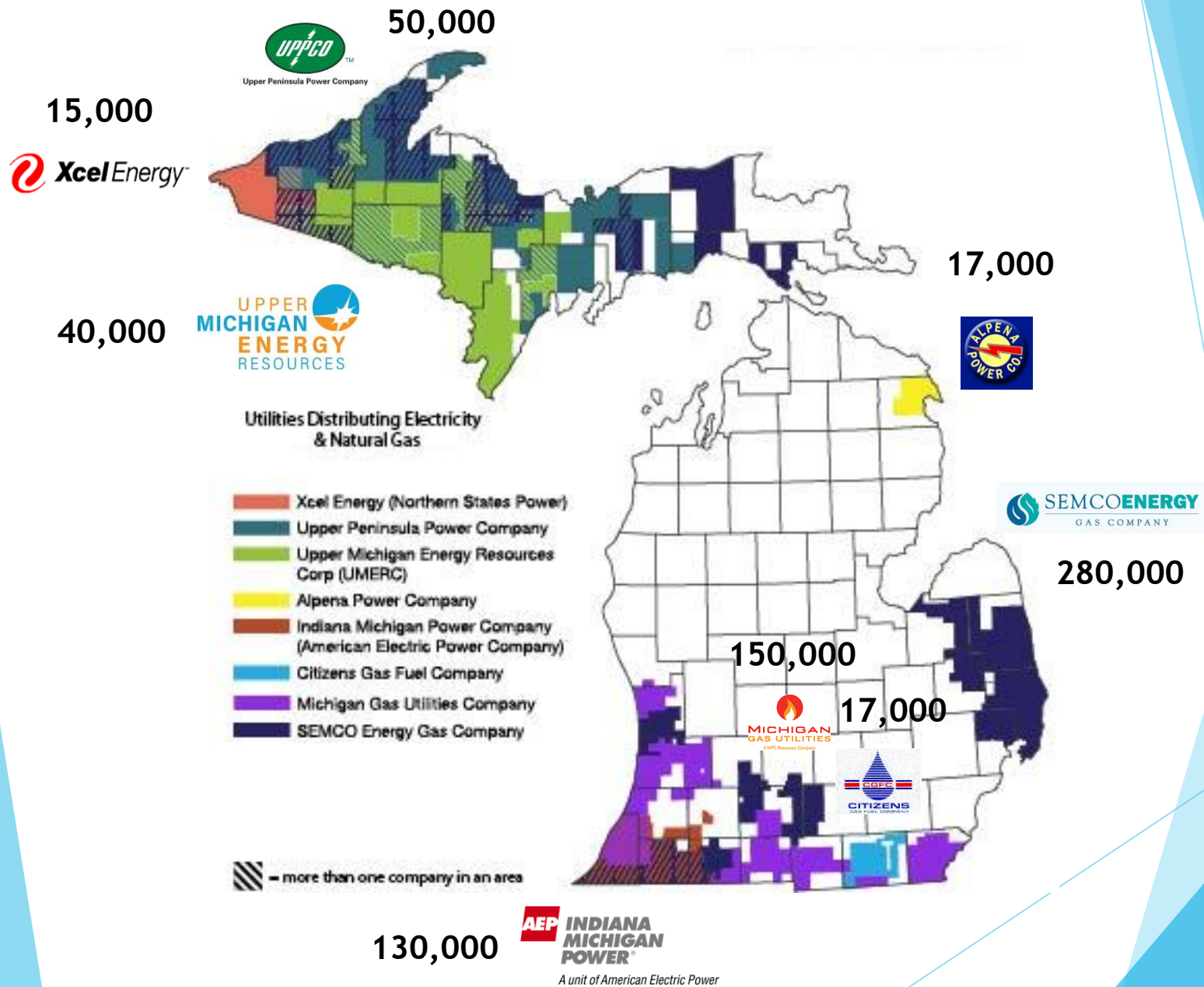
MEGA

Michigan Electric & Gas Association

110 W. Michigan Avenue
Suite 375
Lansing, MI 48933
(517) 484-7730
tanya@gomega.org

Overview

- ▶ 501(c)(6) incorporated in 1984
- ▶ Board membership open to investor-owned electric and/or gas public utilities serving fewer than 500,000 customers
- ▶ 8 members
 - ▶ 3 electric only
 - ▶ 3 natural gas only
 - ▶ 2 combined electric and gas
- ▶ Together serve about 700,000 customers
 - ▶ 242,000 electric
 - ▶ 458,000 natural gas



Industry Participant Members

- ▶ Non-board member providers of electric and gas public utility service and other entities providing related industry functions such as electric and gas transmission or generation



Consumers Energy

Count on Us



DTE Energy®



Associate Participant Members

- ▶ Trade associations representing electric and gas utilities, associations with interests in common with members, and those engaged utility related activities

DyKEMA



MPSC Stakeholder Initiatives

- ▶ 2016 Legislation Implementation
 - ▶ Capacity Demonstration/State Reliability Mechanism
 - ▶ Integrated Resource Plans (CE, DTE, UPPCO, UMERG)
 - ▶ DR/EWR/PBR/GP/COC
- ▶ Ongoing Rulemaking
 - ▶ Interconnection
 - ▶ Distributed Generation/Legacy Net Metering
 - ▶ PURPA Legally Enforceable Obligation
- ▶ Demand Response Aggregation
- ▶ Third-party Community Renewable Energy
- ▶ Rate Cases (DTE, UPPCO)
 - ▶ New DG programs
 - ▶ EV infrastructure
 - ▶ Distribution investments

What's to Come?

- ▶ Statewide Energy Assessment
- ▶ New grid connection rules (interconnection, DG, PURPA LEO)
 - ▶ Treatment of Storage
- ▶ Five-year Distribution Plans
 - ▶ Dynamic forecasting
 - ▶ Hosting capacity analysis
 - ▶ Non-wires alternatives
 - ▶ Benefit cost analysis
- ▶ Careers in Energy Week (October 14 - 19)



July 24 - 26, 2019

Grand Hotel,
Mackinac Island

gomepc.org